

# Sanyo PLUS SERIES: Designed to please both sides of you.

It's a scientific fact that the two sides of your brain control entirely different aspects of your awareness.

One side understands things like logic and mathematics, while the other responds to the aesthetics of art and music.

## The side that appreciates specs.

The analytical side of you demands nothing less than the finest measurable performance today's stereo equipment has to offer.

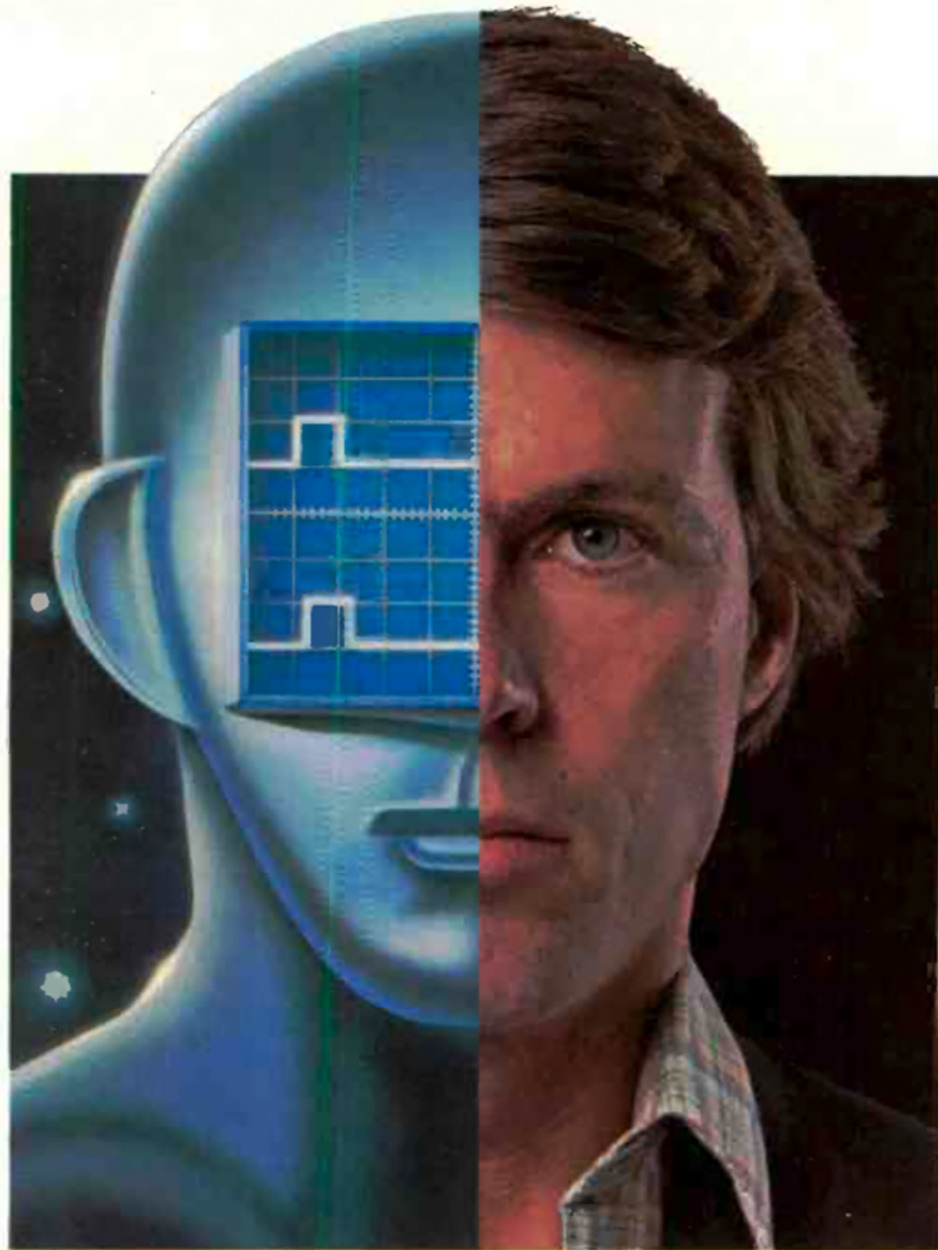
And for that half of your brain, Sanyo's PLUS SERIES will prove spectacular.

PLUS SERIES receivers span from 55 through 200 watts RMS per channel (at 4 or 8 ohms, 20-20,000 Hz) with as little as 0.009% **maximum** total harmonic distortion.

PLUS SERIES cassette decks offer a frequency response of up to 20 Hz - 20,000 Hz — the entire range of human hearing.

PLUS SERIES turntables feature quartz speed control to reduce wow & flutter to a totally imperceptible 0.025% (WRMS).

But while our great specs will convince your



analytical side that these Sanyo components are something special, they don't mean much to the intuitive part of you that goes by what it hears.

## The side that appreciates sound.

The other hemisphere of your brain is only concerned with the emotional impact of sound. Breathtakingly clear, lifelike music.

And for once, the two sides of your brain can agree on something. Because, while one can analyze and appreciate the PLUS SERIES' specs, the other experiences music that is as real and unforgettable as it was intended to be.

The PLUS SERIES from Sanyo is an entirely new world of audio components.

Check it out today at your nearest Sanyo dealer. Both sides of you will be very impressed.

## PLUS SERIES™

When you're ready for something better.

# SANYO



# PLUS 200

Stereo Receiver



 **SANYO PLUS SERIES**

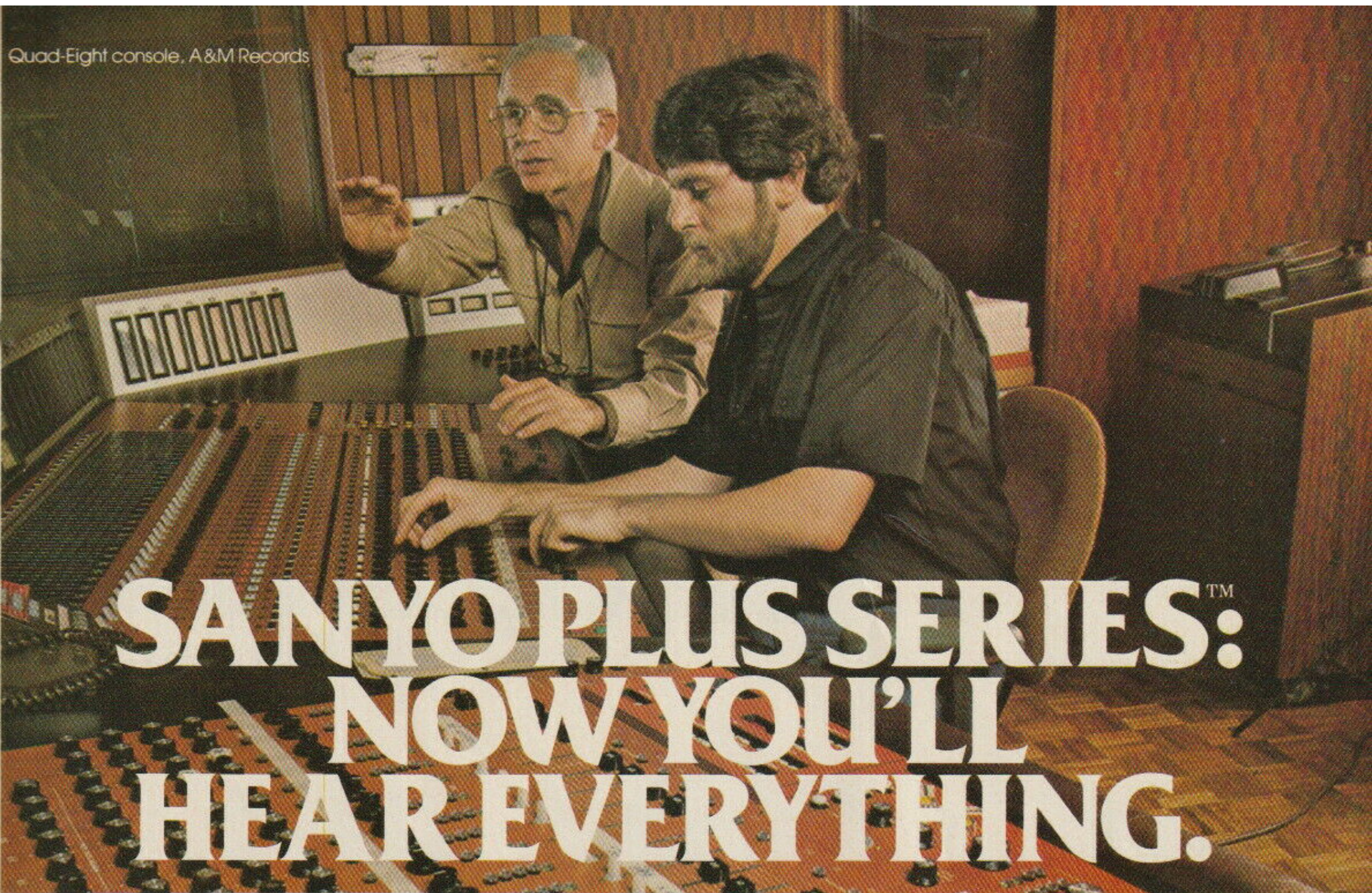
# PLUS 200/130

## Stereo Receivers



 **SANYO PLUS SERIES™**

Quad-Eight console, A&M Records



# SANYO PLUS SERIES:™ NOW YOU'LL HEAR EVERYTHING.

Today's studio technology is putting sounds on record that most home stereos simply can't cope with.

So instead of hearing everything the way it went down at the recording session, you miss the subtle nuances that make the music come to life.

The refined technology of Sanyo PLUS SERIES components lets you hear every

detail captured in your recordings — without perceptible noise, distortion, or coloration to spoil the sensation of living, breathing music.

Hear the gloriously true-to-life sound of Sanyo soon at better audio dealers.



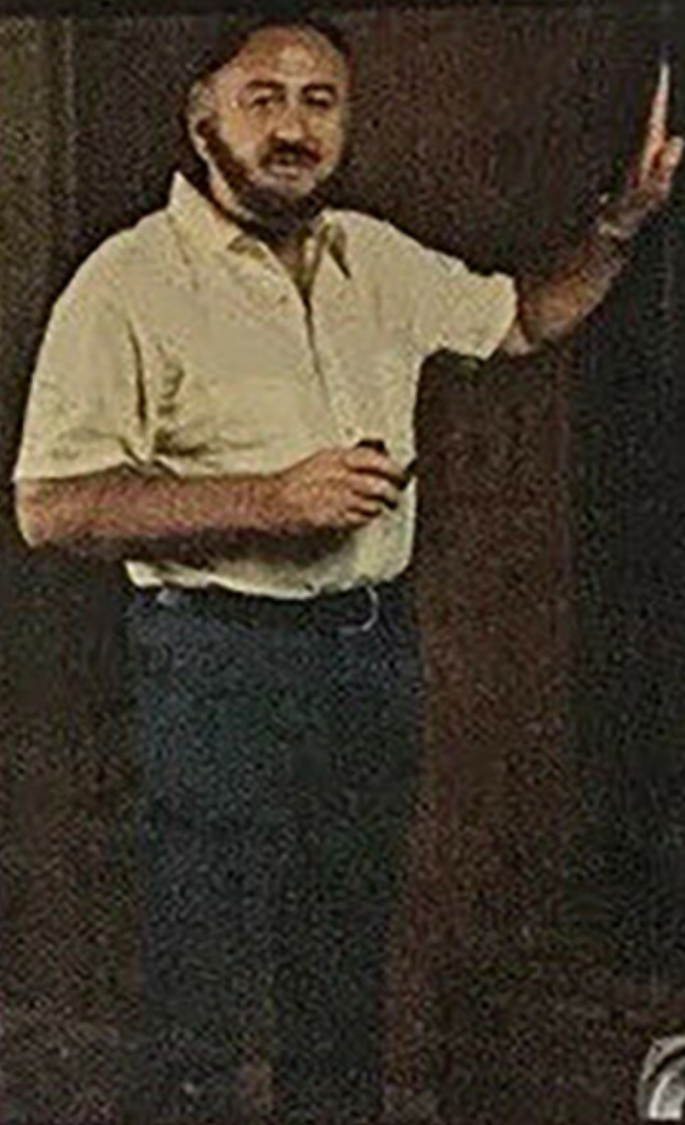
"Because of their high efficiency and low distortion, Altec speakers are usually found with the most advanced professional electronics available. The sound of our speakers with Sanyo's Plus Series receiver more than compares to that standard, with a combination of features seldom found in a single unit."

W. L. Fowler, President  
Altec Corporation



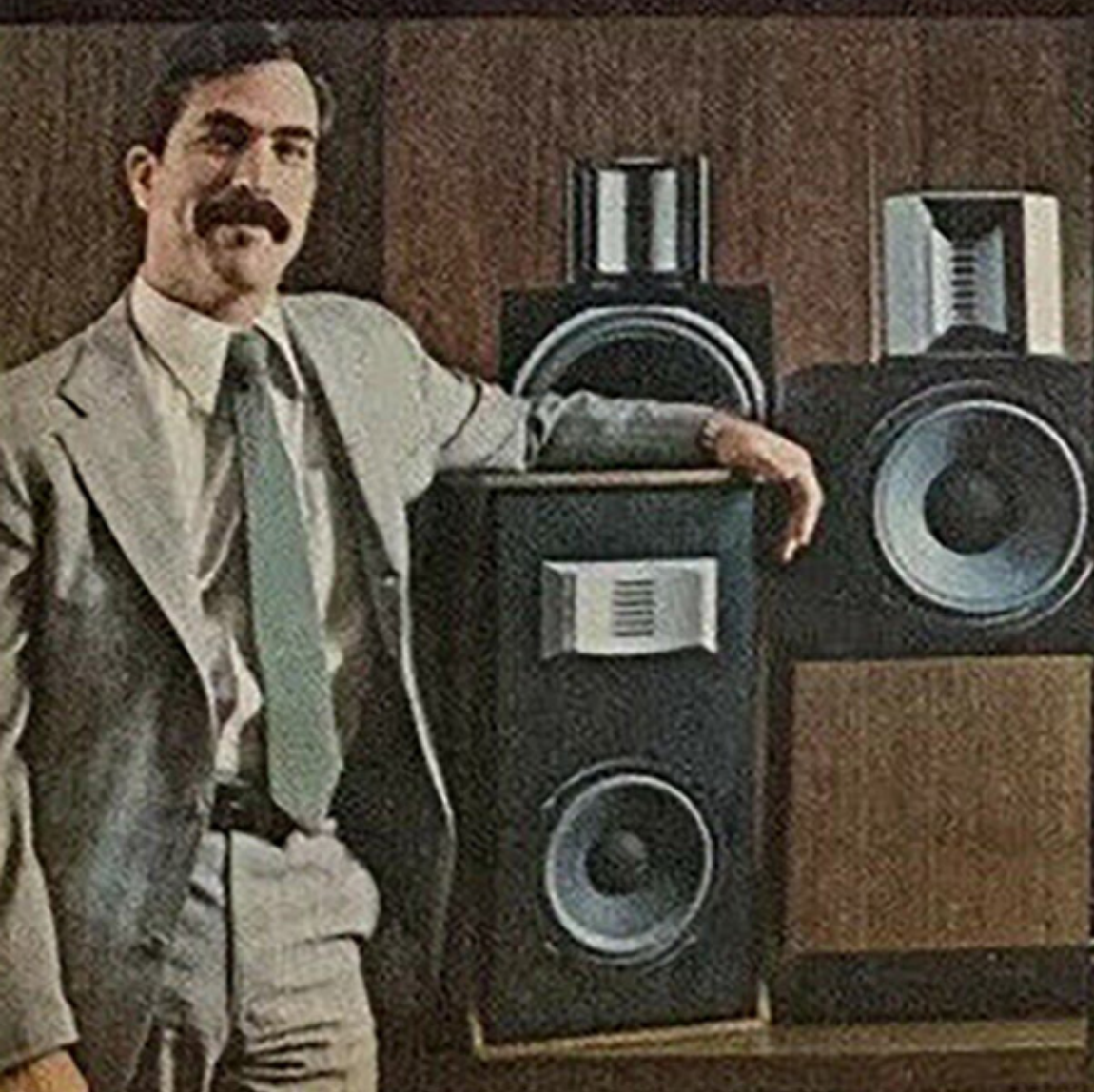
"The controls are well chosen and unusual for a receiver in its price range. The DC amplifier is extremely clean, and with efficient speakers like ours, the dynamic headroom is comparable to systems costing thousands of dollars more."

Gene Czerwinski, President  
Corwin-Vegal



"ESS speakers, with their great reserves of performance, are an ultimate test of a receiver's excellence. Tested in this manner, Sanyo receivers proved to be superb in every respect."

Phillip H. Coelho, President  
ESS Inc.



"After listening tests on the 'Plus 75' driving our HPS-112 Speakers, we were amazed at the absence of overload distortion (clipping) at power levels approaching 100 watts per channel. We have never seen this in a receiver in this price range."

R.M. "Scotty" Stell, President  
Ultralinear Loudspeakers



# When 4 great speaker manufacturers are this enthusiastic about a receiver, you can bet it's outstanding.

These speaker manufacturers sell only quality speakers, so they want to be associated with only quality audio equipment. Since they do not make receivers themselves, they can freely make comments about Sanyo PLUS SERIES receivers.

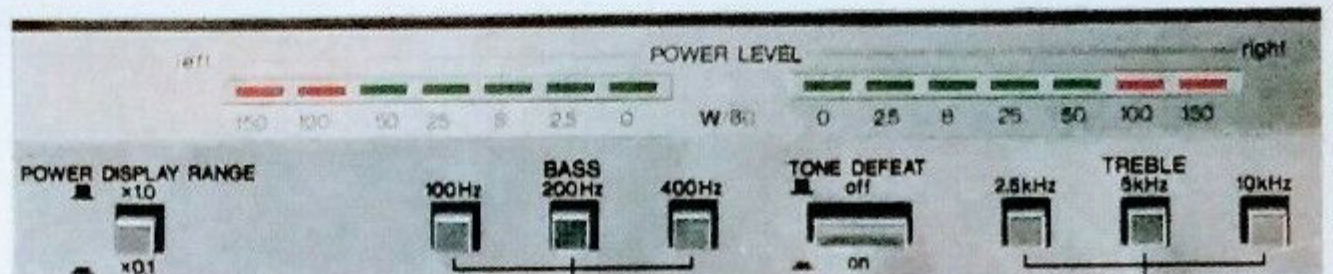
Obviously they have to rely on outstanding performing receivers to demonstrate the excellence of their products.



Sanyo's exclusive fluorescent Digital Plus display moves with dial pointer.

That's where we come in.

Sanyo spent thousands of hours of engineering time developing our new PLUS SERIES receivers, tape decks, turntables, and separates. We listened to prototypes connected to every possible type of speaker. We



7-point LED power output indicator.

didn't stop refining the designs until they sounded great with **any** good speaker you might want to use.



LED signal strength meter. Quartz locked tuning. Moving coil phono cartridge capability.

Then we added a whole set of features that you won't find anywhere else. Like Digital Plus frequency display. Sampling Quartz



Sanyo PLUS SERIES rack mounted separates.

Locked tuning. Built-in moving coil cartridge pre-preamplifiers. Triple Turnover tone controls.

All Sanyo audio components are designed to reproduce music with all its original clarity and detail. The true test of performance is in the listening. But if you happen to be technically inclined, you'll recognize these specs to be among the industry's finest.

PLUS 75: 75 watts min. RMS into 8 ohms, 80 watts into 4 ohms, 20 Hz to 20,000 Hz, with no more than 0.03% total harmonic distortion. Slew Rate 80V/ $\mu$ sec; Phono Signal-to-Noise 97dB with Moving Magnet, 70 dB with Moving Coil; FM sensitivity 10.8 dBf.

We ended up with a line of audio components so advanced that we think they outclass anything else you might be considering. Some of the world's best speaker manufacturers seem to agree.

We think you will, too.

**PLUS SERIES™**  
**SANYO**



# Super D: the next step beyond Dolby and dbx?



Tape noise reduction for the home has been through two "generations" of development.

But now there's a third generation: Sanyo's new Super D. And to hear its awesome performance is to realize just how good cassette recordings can finally sound with all the noise gone.

### Noise Elimination plus Headroom Extension – without audible side effects.

Super D's 2:1 "decilinear" compression during recording and expansion on playback double the dynamic range of any reasonably good tape deck. So background noise simply disappears, and transient peaks are prevented from

satürating the tape, causing distortion and high frequency loss. And the decilinear operation means there are no critical reference levels, and no recalibration every time you change tape types.

Other systems offer 2:1 compression/expansion, but Super D has the crucial advantage of band-splitting – with entirely separate processing of low and high frequencies (see diagram). So the attack and release times of the compressors can be optimized for each band – eliminating "pumping," drastically reducing odd-order bass distortion, and making the system far less susceptible to small tape dropouts.

### Superb Specs... Easy to Operate.

The PLUS N55 Super D processor patches in between your existing cassette or reel-to-reel tape deck and your preamp or receiver. It's equipped with wide-range, instant-responding



fluorescent peak meters, and a 1 kHz oscillator for calibrating it to your tape deck.

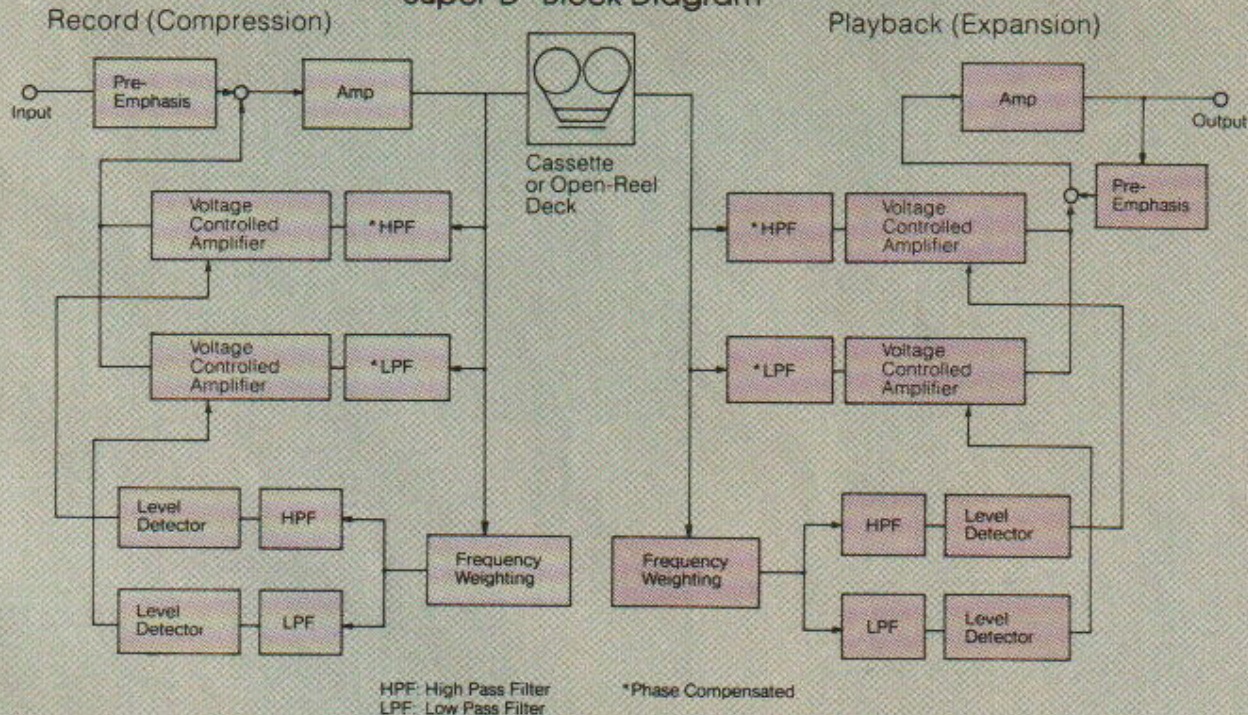
After initial setup, you can ignore the record and output level controls on your deck, as well as the old-fashioned VU meters it's probably equipped with. The PLUS N55 encodes and decodes simultaneously, so with a 3-head deck you can monitor the beautifully clean playback while you're recording.

And it will be clean! The PLUS N55 has a dynamic range of 100dB, and typical harmonic distortion of 0.08% (1 kHz, nominal operating level). It's ideal for professional use, with supplied rackmount handles and low impedance outputs that let it drive long signal lines.

So before you invest in any noise reduction system, listen to the affordably priced Sanyo Super D.

And step up to total silence.

"Super D" Block Diagram



**PLUS SERIES™**

**SANYO**

CIRCLE NO. 40 ON READER SERVICE CARD







# SANYO

## AM/FM STEREO TUNER AMPLIFIER

# R5

(U.S.A.)



## SPECIFICATIONS

### POWER AMPLIFIER SECTION

Minimum RMS sine wave power per channel within stated bandwidth at no more than stated distortion and with 8-ohm load 20 Watts

Power Bandwidth 40 Hz – 20 kHz

Total Harmonic Distortion 0.5 %

I.M. Distortion 0.5 %

Speaker Damping >20

### PRE-AMPLIFIER SECTION

Tone Controls Bass (100 Hz): ±10 dB  
Treble (10 kHz): ±10 dB

Loudness Control +8 dB (at 100 Hz)  
+4 dB (at 10 kHz)

Input Sensitivity/Impedance Phono: 2.5 mV/50 kohms  
Tape: 150 mV/50 kohms

Tape Rec Output Level 150 mV

Frequency Response Phono (30 Hz – 15 kHz) ±1.0 dB  
Aux. (20 Hz – 20 kHz) ±1.0 dB

### FM SECTION

Tuning Frequency Range 88 MHz – 108 MHz

Usable Sensitivity Mono 2.8 μV/14.14 dBf  
Stereo 6.5 μV/21.46 dBf

IF Rejection 80 dB

Image Rejection 50 dB

### FM SECTION

AM Suppression 60 dB

Capture Ratio 1.0 dB

Selectivity 60 dB

Signal to Noise Ratio Mono 65 dB  
Stereo 60 dB

Harmonic Distortion Mono 0.2 %  
Stereo 0.5 %

Stereo Separation (at 1 kHz) 40 dB

### AM SECTION

Tuning Frequency Range 535 kHz – 1605 kHz

Usable Sensitivity 300 μV/m

IF Rejection 40 dB

Image Rejection 40 dB

Selectivity 40 dB

Signal to Noise Ratio 55 dB

### GENERAL SECTION

Power Source AC: 120 V, 60 Hz

Power Consumption 110 W

Dimensions (W) x (D) x (H) 11-3/4" x 9-1/2" x 4-3/4"

Weight (approx.) 11.5 lbs.

\*Specifications are subject to change without notice.

WM-7372



## CASSETTE TAPE DECK

# PLUS D55

(U.S.A.)



### SPECIFICATIONS

Tape	Metal, CrO <sub>2</sub> , FeCr and normal tape	Signal to noise ration	67 dB (Dolby switch ON) CrO <sub>2</sub> tape 59 dB (Dolby switch OFF) CrO <sub>2</sub> tape
Recording system	AC bias, 1/4 track stereo	Input	MIC: 400 ohms to 10K ohms (0.3mV) LINE IN: 50K ohms (50mV)
Erasing system	AC erasing, 1/2 track	Output	LINE OUT: 7K ohms (0.53V) HEADPHONES: 8 ohms to 10K ohms (50mV)
Tape speed	1-7/8 ips. (4.75 cm/sec)	Power source	AC: 120V, 60Hz
Recording time	60 min. (60 cassette tape)	Dimensions	17-5/16"(W) x 11-7/8"(D) x 5-1/2"(H) (440 x 291 x 139 mm)
Rewind & Fast forward time	100 sec. (60 cassette tape)	Weight	Approx. 12 lbs. 12 ozs. (5.8kg)
Wow & Flutter	0.04% WRMS		
Frequency response	20-20000 Hz (Metal tape) 20-17000 Hz (FeCr tape) 20-17000 Hz (CrO <sub>2</sub> ) 20-13000 Hz (Normal tape)		

\* Specifications subject to change without notice.



# SANYO

## STEREO TURNTABLE

# PLUS Q40

(U.S.A.)



### SPECIFICATIONS

Motor	Quartz PLL brushless servo motor	Tracking error	$\pm 1.5^\circ$
Drive system	Direct drive/Full auto	Stylus pressure force range	0-3 gr.
Speeds	33-1/3 and 45 rpm	Overhang	15 mm
Wow & flutter	0.03% WRMS	Power source	AC: 120V, 60Hz
Rumble	-70dB DIN B spec.	Power consumption	6 watts
Turntable platter	Aluminum die casting 12-1/16" (306 mm) dia. 2 lbs. 3 ozs. (1 kg)	Dimensions (Approx.)	17-3/8" W x 14-13/16" D x 6-1/8" H (440 x 372 x 156 mm)
Tone arm	Static-balance straight type	Weight (Approx.)	14 lbs. 2 ozs. (6.4 kg)

\*Specifications and design are subject to change without notice.

 **SANYO****STEREO TURNTABLE****PLUS Q25****(USA)****SPECIFICATIONS**

Motor	Quartz PLL brushless servo motor	Tracking error	$\pm 1.5^\circ$
Drive system	Quartz direct drive/Semi auto	Stylus pressure force	0 – 3 gr.
Speeds	33-1/3 and 45 rpm	range	
Wow & flutter	0.03% WRMS	Overhang	15mm
Rumble	-70dB DIN-B spec.	Power source	AC: 120V, 60Hz
Turntable platter	Aluminum die casting 12-1/16" (306mm) dia. 2 lbs. 3 ozs. (1 kg)	Power consumption	6 watts
		Dimensions (Approx.)	17-3/8" (W) x 15-1/16" (D) x 5-3/4" (H) (440 x 383 x 148mm)
Tone arm	Static-balance straight type	Weight (Approx.)	13 lbs. 4 ozs. (6 kg)
Usable cartridge weight	4 – 10 gr		

\* Specifications and design are subject to change without notice.

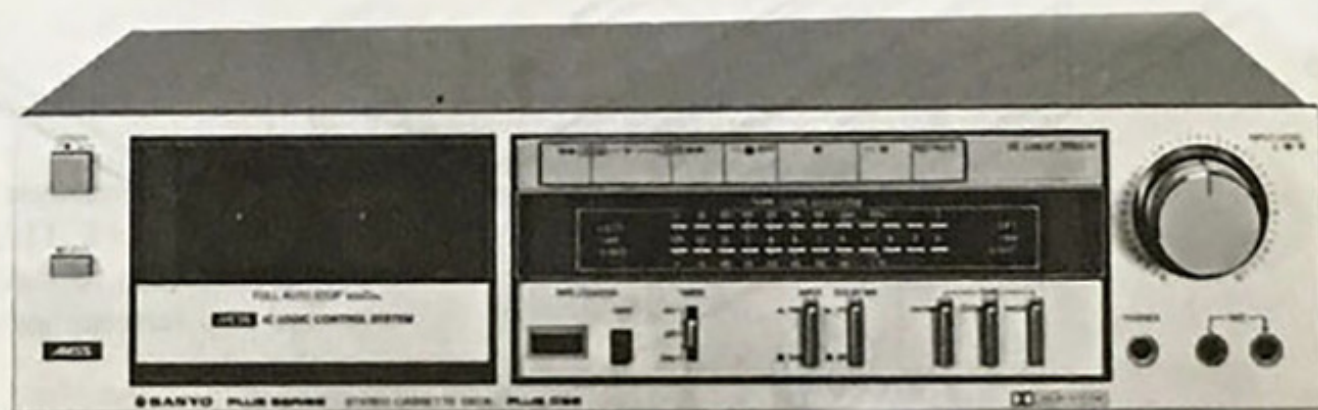


# SANYO

## CASSETTE TAPE DECK

# PLUS D56

( U. S. A. )



### SPECIFICATIONS

Tape . . . . . Metal, CrO<sub>2</sub>, normal tape  
 Recording system . . . AC bias, 4-track stereo  
 Erasing system . . . . AC erasing, 2-track  
 Tape speed . . . . . 1-7/8 ips. (4.75 cm/sec.)  
 Recording time . . . . 60 min. (C-60)  
 REW & F FWD time . . Approx. 90 sec. (C-60)  
 Wow & flutter . . . . . 0.05% (WRMS)  
 Frequency response  
 Metal . . . . . 30 - 19,000 Hz  
 CrO<sub>2</sub> . . . . . 30 - 17,000 Hz  
 Normal . . . . . 30 - 14,000 Hz  
 S/N Ratio (CrO<sub>2</sub>)  
 Dolby NR - on . . . 65 dB  
 Dolby NR - off . . . 57 dB

Inputs  
 MIC . . . . . 400 ohms to 10k ohms (0.3 mV)  
 LINE IN . . . . . 50k ohms (50 mV)  
 Outputs  
 LINE OUT . . . . . 2k ohms (0.4 V)  
 PHONES . . . . . 8 ohms to 10k ohms  
 Power requirements . . AC : 120 V, 60 Hz  
 Power consumption . . 11 W  
 Dimensions (Approx.) . 17-9/32"(W)x11-9/16"(D)x4-3/16"(H)  
 . . . . . (440 x 294 x 106 mm)  
 Weight (Approx.) . . . 8 lbs. 4 ozs. (3.75 kg)

\* Specifications subject to change without notice.

# SERVICE MANUAL

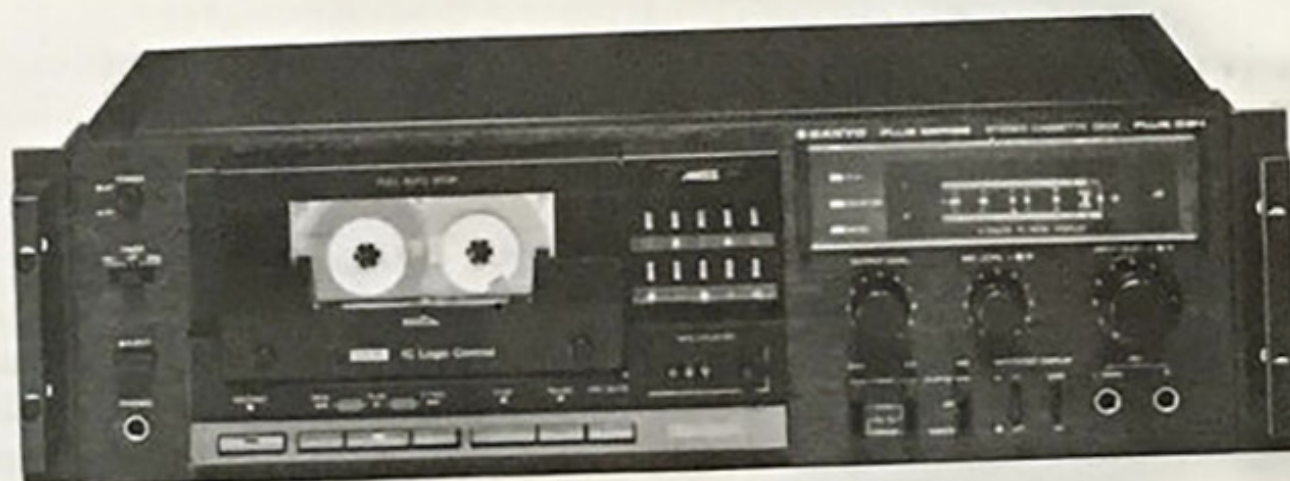
## CASSETTE TAPE DECK



# SANYO

# PLUS D64

(U.S.A)



### SPECIFICATIONS

Tape	Metal, CrO <sub>2</sub> , FeCr and Normal tape
Recording system	AC bias, 1/4-track stereo
Erasing system	AC erasing, 1/2-track
Tape speed	4.75 cm/sec. (1-7/8 i.p.s.)
Recording time	60 min. (C-60)
Rewind and fast forward time	100 sec. (C-60)
Wow and flutter	0.04% WRMS
Frequency response	20 - 20,000Hz (metal) 20 - 17,000Hz (CrO <sub>2</sub> ) 20 - 17,000Hz (Fe-Cr) 20 - 14,000Hz (normal)
Signal to noise ratio	67dB (Dolby on, CrO <sub>2</sub> tape) 59dB (Dolby off, CrO <sub>2</sub> tape)
Input	MIC: 400 ohms to 10 kohms (0.4mV) LINE IN: 50 kohms (60mV)
Output	LINE OUT: 8 kohms (0.53V) PHONES: 8 ohms to 10 kohms (0 - 60mV)
SUPER D™	Encode out: 85mV Decode in: 0.53V Decode out: 100mV Encode in: 80mV
Power source	AC: 120V, 60Hz
Power consumption	35W
Dimensions (Approx.)	440(W) x 291(D) x 139(H) mm (17-5/16" x 11-1/2" x 5-1/2")
Weight (Approx.)	7.7kg (16 lbs. 8 ozs.)

\* Specifications subject to change without notice.


**SANYO**
**STEREO PREAMPLIFIER**
**PLUS C55**  
 (U.S.A.)

**SPECIFICATIONS**

<b>Input Sensitivity/Impedance</b>		<b>Tone Controls</b>	
Phone (MM)	2.5 mV/47 k-ohms	Bass (100 Hz)	±10 dB max.
Phone (MC)	100 μV/100 ohms	Treble (10 kHz)	±10 dB max.
Aux, Tape 1, 2	150 mV/47 k-ohms	Bass Turnover Frequencies	100/200/400 Hz
<b>Frequency Response</b>		Treble Turnover Frequencies	2.5/5.0/10 kHz
Phone (RIAA standard curve)	±0.2 dB	Subsonic Filter	
Aux, Tape	+0dB/−0.3dB (20 Hz – 20 kHz)	Cutoff Frequency	15/30 Hz
	+0dB/−1dB (10 Hz.– 100 kHz)	Slope	−12 dB/octave
<b>Signal-to-Noise Ratio (IHF-A weighted)</b>		Output Voltage/Impedance	
Phono MM (at 10 mV)	97 dB	Pre Out	1V/600 ohms
(at 2.5 mV)	85 dB	TAPE REC 1, 2	150 mV
MC (at 100 μV)	70 dB	Total Harmonic Distortion	
Aux, Tape	100 dB	(20 Hz-20 kHz, any input to any output, output level 3V or less)	0.003%
Phone Maximum Input Voltage		Power Supply	120V AC, 60 Hz
(1 kHz) MM	250 mV RMS	Power consumption	20W
MC	10 mV RMS	Dimensions (W x D x H)	17-3/8" x 10-11/16" x 1-3/4" (440 x 270 x 44mm)
		Weight (Approx.)	3.9kg

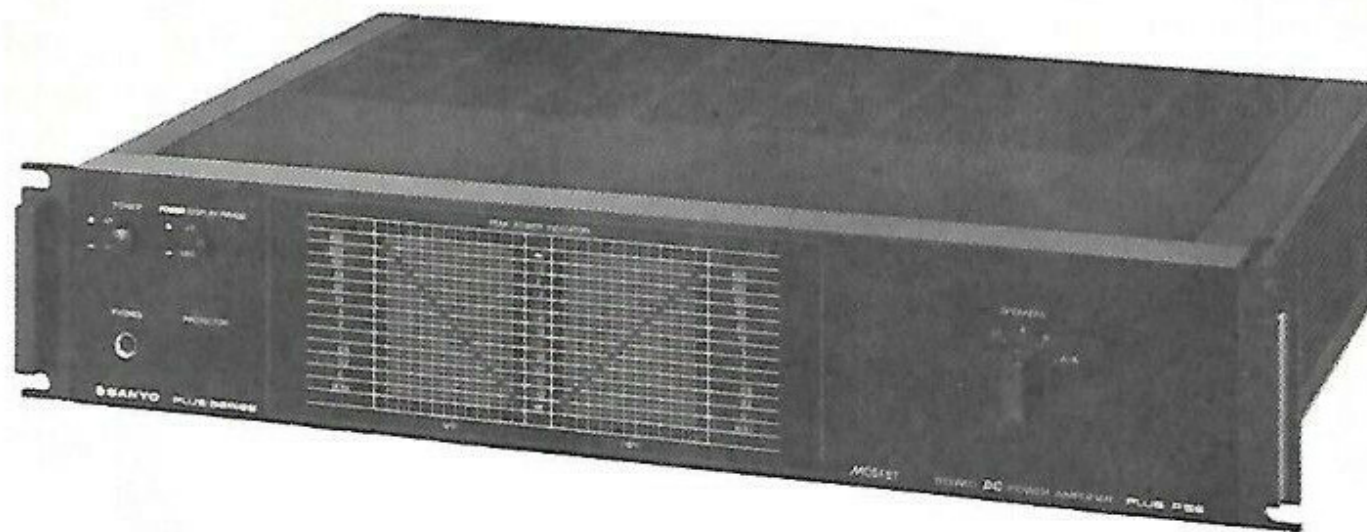
\* Specification subject to change without notice.



# FET STEREO POWER AMPLIFIER

# PLUS P55

(U.S.A.)



## SPECIFICATIONS

Continuous minimum sine wave RMS power output per channel at 8 ohms from 20Hz to 20kHz with no more than 0.009%(NORMAL) 0.03%(STRAPPED MONO) harmonic distortion.  
 (NORMAL) 100 watts  
 (STRAPPED MONO) 200 watts

Damping factor  
 NORMAL 60 (at 1kHz 8 ohms)  
 STRAPPED MONO 40 (at 1kHz 8 ohms)

Input sensitivity and impedance  
 NORMAL 1V/47 kohms  
 STRAPPED MONO 0.7V/47k ohms

Intermodulation distortion (60Hz:7kHz - 4:1)  
 NORMAL 0.009%(100W output, 8 ohms)  
 STRAPPED MONO 0.03%(200W output, 8 ohms)

Transient response: Slew rate  
 NORMAL 150V/ $\mu$ sec

Frequency response (1W output, 8 ohms)  
 NORMAL DC - 100kHz (+0/-1dB)  
 STRAPPED MONO DC - 100kHz (+0/-2dB)

Signal to noise ratio  
 NORMAL (IHF-A curve) 110dB

Power requirements AC 120V, 60Hz  
 Power consumption 400W  
 Dimensions (Approx.) 440(W) x 320(D) x 88(H)mm (17-3/8" x 12-9/16" x 3-1/2")  
 Weight (Approx.) 12 kg

\* Specifications are subject to change without notice.





# SANYO

## AUDIO PROGRAM TIMER

# PLUS ES5

(U.S.A.)



### SPECIFICATIONS

Number of channels	2 (AC 1, AC 2)	Displays	
AC outlets	AC 1. 500W Max. AC 2. 700W Max.	AC 1	on/off time
Timing resolution	1 minute	AC 2	on/off intervals
Program repeat cycle	24 hours	Main	(30 min. resolution)
Programable		Other functions	Real time AM/PM, hr/min.
on/off intervals (per 24 hours)			Sleep with programable interval, Wake up.
AC 1	1	Dimensions (WxDxH)	17-3/8" x 10" x 1-3/4"
AC 2	9		(19" W with rack handles attached)
		Accessory	Rack handles x 2

\* Description and specifications subject to change without notice.

# CASSETTE TAPE DECK

 **SANYO**

**PLUS D60**

(U.S.A.)



## SPECIFICATIONS

Tape	Metal, CrO <sub>2</sub> , FeCr and normal tape
Recording system	AC bias, 1/4 track stereo
Erasing system	AC erasing, 1/2 track
Tape speed	1-7/8 ips. (4.75 cm/sec)
Recording time	60 min. (60 cassette tape)
Rewind & Fast forward time	100 sec. (60 cassette tape)
Input	MIC: 400 ohms to 10K ohms (0.3 mV) LINE IN: 50K ohms (50mV)
Output	LINE OUT: 7K ohms (0.53V) HEADPHONES: 8 ohms to 10K ohms (50mV)
Power source	AC: 120V, 60Hz
Dimensions	17-5/16"(W) x 11-7/8"(D) x 5-1/2"(H) (440 x 291 x 139mm)
Weight	Approx. 12 ozs (5.8 kg)

\* Specifications subject to change without notice.


**SANYO**

# STEREO RECEIVER

# PLUS 55

(U.S.A.)



## SPECIFICATIONS

### AMPLIFIER SECTION

Continuous minimum sine wave RMS power output per channel at 8 ohms from 20Hz to 20kHz with no more than 0.04% harmonic distortion. **55watts**

Maximum Total Harmonic Distortion (from 250 mW to rated power into 8 ohms, 20 Hz to 20,000 Hz, Aux input)	0.04%
Intermodulation Distortion (rated power, Aus input, 60 Hz & 7 kHz, 4:1)	0.04%
Input Sensitivity/Impedance	
Phono	2.5 mV/47k ohms
Aux, Tape 1, 2	150 mV/47k ohms
Frequency Response	
Phono (RIAA standard curve)	±0.2 dB
Aux, Tape	±0.5 dB
	(20 Hz– 20 kHz)
	±1 dB
	(10 Hz– 40 kHz)
Signal-to-Noise Ratio (IHF-A weighted)	
Phono (at 10 mV)	87 dB
(at 2.5 mV)	75 dB
Aux, Tape	95 dB
Damping Factor (1 kHz, 8 ohms)	40
Residual Hum & Noise at Speaker Outputs	0.6 mV
Transient Response (Slew rate)	60 volts per micro-second
Phono Maximum Input Capacity (1 kHz)	150 mV RMS
Tone Controls	
Bass (100 Hz)	±10 dB
Treble (10 kHz)	±10 dB
Loudness Control (Vol. -30 dB) 100 Hz/10 kHz	+8 dB/+3 dB
Filters	
Subsonic (30 Hz)	-12 dB/oct.
High (8 kHz)	-6 dB/oct.
Output Voltage	
Tape Rec 1, 2	150 mV

### FM TUNER SECTION

Frequency Range	88 – 108 MHz
Usable Sensitivity	
Mono	10.8 dBf (1.9 μV)
50 dB Quieting Sensitivity	
Mono	13.7 dBf (2.7 μV)
Stereo	37 dBf (39 μV)
Maximum Signal-to-Noise Ratio	
Mono	75 dB
Stereo	70 dB
Total Harmonic Distortion	
Mono 100 Hz	0.2%
1 kHz	0.2%
6 kHz	0.35%
Stereo 100 Hz	0.35%
1 kHz	0.3%
6 kHz	0.4%
Frequency Response	20 Hz – 15,000 Hz; +1, -2 dB
Alternate Channel Selectivity at ±400 kHz	75 dB
Capture Ratio	1.2 dB
AM Suppression Ratio	55 dB
Stereo Separation	
1 kHz	45 dB
10 kHz	35 dB
Spurious Response Rejection (98 MHz)	80 dB
Image Rejection Ratio	70 dB
IF Rejection Ratio (98 MHz)	90 dB
Muting Threshold	5 μV

### AM TUNER SECTION

Frequency Range	525 – 1620 kHz
Usable Sensitivity (Ferrite – External Antenna)	300 μV/m – 30 μV
Signal-to-Noise Ratio (at 5 mV/m)	45 dB
Selectivity	35 dB
Image Rejection Ratio (1000 kHz)	50 dB
IF Rejection Ratio (1000 kHz)	45 dB

### GENERAL

Dimensions (W x H x D)	18-7/8" x 5-1/4" x 11-1/2"
Power requirements	AC: 120V, 60Hz
Power consumption	200W
AC Outlets	
Switched	1 (100 W max.)
Unswitched	1 (100 W max.)

SPECIFICATIONS ARE SUBJECT TO CHANGE WITHOUT NOTICE.



# SANYO

## STEREO AMPLIFIER

# PLUS A35

(U.S.A.)



### SPECIFICATIONS

Continuous minimum sine wave RMS power output per channel at 8 ohms from 20Hz to 20kHz with no more than 0.02% harmonic distortion.	50 watts	Tone control response	
Intermodulation distortion (60Hz:7kHz - 4:1 AUX)	0.015% (25 watts output, 8 ohms)	BASS	±10dB (at 100Hz)
Transient response: Slew rate	90V/μsec	TREBLE	±10dB (at 10kHz)
Damping factor	50 (at 1kHz 8 ohms)	Subsonic filter response	30Hz (-12dB/oct.)
Input sensitivity and impedance		High filter response	8kHz (-6dB/oct.)
PHONO (MM)	2.5mV/47K ohms	Loudness control response	
PHONO (MC)	0.25mV/100 ohms	at 100Hz	+8dB
AUX/TUNER/TAPE	150mV/47K ohms	at 10kHz	+3dB
Phono overload level		Signal to noise ratio	
PHONO (MM)	250mV	PHONO (MM)	85dB (at 2.5mV)
PHONO (MC)	25mV	PHONO (MC)	70dB (at 0.25mV)
Output level		AUX/TAPE	95dB
TAPE 1 REC/TAPE 2 REC	150mV	Power requirements	AC: 120V, 60Hz
Frequency response		Power consumption	200W
PHONO (MM)/PHONO (MC)	±0.2dB (RIAA 20Hz - 20kHz)	Dimensions	Approx. 440(W) x 270(D) x 88(H) mm
AUX/TAPE	±0.5dB (20Hz - 20kHz)	Weight	(17-3/8" x 10-11/16" x 3-1/2") Approx. 8.7kg (19 lbs. 3 ozs.)

\* Specifications are subject to change without notice.

# Loud and Proud

HIFIGOTEBORG.se a



WANT TO RELAX TO BEAUTIFUL  
MUSIC

**WELCOME**

WE HAVE GOOD HIFI AT YOUR  
SERVICE

PLEASE WAIT HERE & A MEMBER  
OF OUR TEAM WILL BE WITH  
YOU SHORTLY.

Or press finger HERE