

# ADDC

## ACCUTRAC 4000



Vinyl record







The world-famous Accutrac' 4000 Turntable in Kit form by Heath - build it yourself and SAVE!

**\$389<sup>95</sup>**  
Kit

- The world's ONLY "totally" programmable turntable
- Play individual cuts in the order you choose
- Repeat-play or skip individual cuts
- No soldering -plug-in circuit boards and wires with all connectors for easy 2-3 hour assembly

The world-famous Accutrac 4000 turntable has established a new standard in state-of-the-art performance and convenience, and now Heath brings it to you in money-saving kit form. The Accutrac gives you total "computerized" control over how you play your records, and you can operate it from its own front panel controls, or from your easy chair with the wireless remote control included! The remote control transmitter has a range of up to 30 ft. so you can operate the Accutrac from anywhere in your room.

Has; superior turntable features too: precision direct-drive; die-cast, dynamically-balanced platter; tubular "S" shaped tonearm with electronically controlled cue, pause and muting, anti-skate and individual 5% variable pitch control for each speed. The built-in cartridge tracks at 1/2 to 1 1/2 grams, and provides a frequency response of 10 Hz to 24,000 Hz. Over all size, 18 1/2" W X 17 3/8" D x 6" H. Includes base, dust cover, wireless remote transmitter and receiver, built-in high performance cartridge. Kit assembly of the AL-1700 is really easy, with a comprehensive step-by-step assembly manual, plug-in circuit boards and wires with all connectors attached. Typical assembly time is just 2-3 hours, and there's absolutely NO soldering! The remote transmitter and receiver are fully assembled too. The AL-1700 is a great way to get a Neal build-it-yourself bargain from Heath! Order yours today.

**Kit AL-1700. Shop. wit. 27 lbs..... 389,95**

AL-1700 SPECIFICATIONS: Turntable Speeds: 33 1/3 and 45-rpm, electronic speed change. Variable Pitch Controls: 5% Range, individual control for each speed. Build up Time: Within 2 seconds to full speed. Wow and Flutter: less than 0.03 WRMS (DIN 45507). Rumble: Better than -70 dB (OIN 45539B), better than -50 dB (DIN 45539A). Cartridge Type: low-mass Induced magnet. Output: 3.5 mV/5.5 cm/sec. Channel Separation: 28 dB.- Stylus Tip: 0.0003x0.00007" elliptical diamond. Power Requirements: 120 VAC, 50/60 Hz.



The AL-1700 Includes a Remote Transmitter and Receiver So You Can "Program" It Right From Your Easy Chair! It's One of the Most Modern and Convenient Turntables We've Seen Anywhere!





# Accutrac. The turntable with eyes.



Introducing Accutrac.  
The only turntable in the world  
that lets you tell an LP which selections  
you want to hear, the order you want to hear  
them in, even how many times you want to  
hear each one.

Sounds like something out of the 21st  
century, doesn't it? Well, as a result of  
Accutrac's electro-optics, computer program-  
ming and direct drive capabilities, you  
can have it today.

Just imagine you want to  
hear cuts 5, 3 and 7 in that order.  
Maybe you even want to hear cut  
3 twice, because it's an old favorite,  
Simply press buttons 5, 3, 3 again,  
then 7. Accutrac's unique infra-red  
beam, located in the tonearm head, scans  
the record's surface. Over the  
recorded portion the beam scatters but  
over the smooth surface between  
selections the infra-red light is reflected  
back to the tonearm, directing it  
to follow your instructions.



What's more, it can do this by cordless  
remote control, even from across the room.

The arm your fingers never have to touch.

Since Accutrac's tonearm is electroni-  
cally directed to the record, you never risk  
dropping the tonearm accidentally and scratch-  
ing a record, or damaging a stylus.

And, since it cues electronically, too,  
you can interrupt your listening and then  
pick it up again in the same groove, within a  
fraction of a revolution. Even the best damped  
cue lever can't provide such accuracy. Or  
safety.

What you hear is as incredible as what  
you see.

Because the Accutrac servo-motor  
which drives the tonearm is decoupled the  
instant the stylus goes into play, both hori-  
zontal and vertical friction are virtually elimi-  
nated. That means you get the most accurate  
tracking possible and the most faithful  
reproduction.

You also get wow and flutter at a com-  
pletely inaudible 0.03% WRMS Rumble at  
-70 dB (DIN B). A tracking force of a mere  
3/4 gram and tonearm resonance at the  
ideal 8-10 Hz.

The Accutrac 4000 system When you  
see and hear what it can do, you'll never be  
satisfied owning anything else.

Its father was a turntable.  
Its mother was a computer.

## The Accutrac 4000



ADC Professional Products Group, A Division of BSE/COM/L&E, 2015, Bala Cynwyd, PA 19004



# This is the safest place in the world to play your records.

We believe you should have as little as possible to do with the ADC Accutrac 4000

So once you've placed your record on the turntable, and pressed a few buttons, you can leave the rest to the world's first computerised turntable

The human errors that do a lot of damage to records are a thing of the past

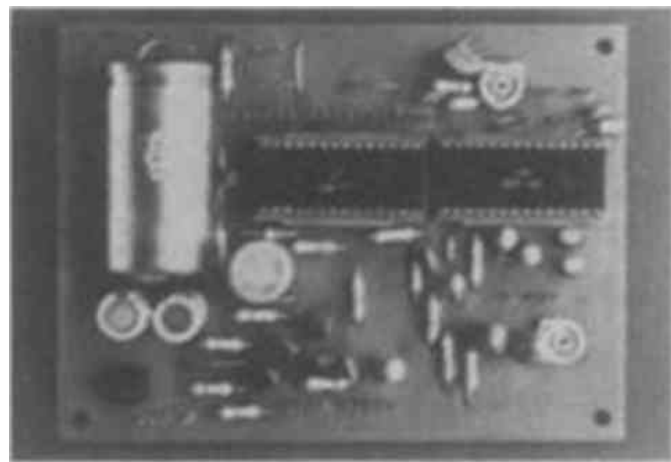
**You get more out of it, because we put less into it.**

It's a fact that when you compare the ADC Accutrac to other expensive turntables, the rest are made to look clumsy, complex and old-fashioned

Truly superb sound reproduction can now be achieved in a much simpler way

**The turntable with a memory.**

We started by replacing a lot of noisy mechanics with a neat little computer



Out came standard components

In went the latest breakthrough in MOS computer circuitry

So all Accutrac's operations are controlled and programmed far more quickly and efficiently than any other automatic turntable

The control panel is designed for you to select up to 13 tracks in any order you want to hear them, and a 24 selection memory bank allows for programmed repeats

The motor that keeps an eye on itself, replaced the conventional belts, wheels and pulleys with an electronically controlled direct drive system that keeps wow and flutter to a completely inaudible 0.3% and rumble at -70dB

The motor contains electronic speed-sensing circuits, which keep a constant eye on the accuracy of the massive 12 inch decast turntable's speed, and instantly corrects any error

There's also a speed tuning circuit that lets you vary the speed over SV

A glance through the stroboscope provides a

The tonearm you never touch.

We did some more experimenting

Out went the noisy linkages that power automatic arms from the main turntable drive



motor

Out went velocity-sensing mechanical arm-trip mechanisms

Out went all the clumsy cams and gears

Instead, Accutrac's tonearm is moved by its own electro-optically controlled servo-motor. It responds instantly and silently to your

programme in the turntable's memory bank

Tracking error is minimised by the arm's 9 1/3 inch (237mm) effective length, and horizontal and

vertical bearing friction has been reduced to the negligible level of 5-7mg, due to Accutrac's new

ball race and pivot system. From the instant the stylus touches the record, the arm is totally

decoupled from the servo motor and controls, so it always tracks the groove with perfect freedom

**The cartridge that knows where it's going.**

Accutrac has the most advanced cartridge in the world

The ADC LMA-1

It scans the surface of the record with a tiny beam of light from a solid-state infra-red generator

When the beam is focused on the record, closely spaced grooves scatter the light, while the smooth surface

between the tracks reflects the light back to a detector which triggers the arm mechanism

This system ensures that the tonearm selects the right track quickly and smoothly, while accurately gauging

where it begins and ends. The low mass cartridge with its elliptical stylus, features the *Induced Magnet* system on

which ADC built its enviable reputation.

It combines a strong, accurate, signal output with a 3/4 to 1 1/2 gram tracking ability.



The integrated design of the tonearm and cartridge results in minimal arm mass and an ideal tonearm resonance between 8-10Hz

It's all at your command.

As you see, Accutrac has some very intriguing features, quite apart from the turntable



What looks like a pocket calculator

is actually a

cordless command module

So you have remote control

The sculptured space-age object is the receiver for the turntable's memory bank. It's

'winking eye' tells you that your commands have been received

Then you just sit back and enjoy what we hope you'll agree is the main attraction: the sheer excellence of the sound reproduction



Distributed by:  
BSR (Australia) Pty Ltd.  
Anne Street St Marys.  
NSW 2760  
Phone 62300375.6235410

## Accutrac 4000™

Guaranteed for 2 years



# ADC Accutrac 4000

The Accutrac 4000 turntable is quite unique in that it has the ability to computer programme your turntable to play a record's tracks in any order.

It is a very attractive unit, with a teak plinth and base plate. Our sample for review was an advance model and came with this finish, however we understand that a walnut finish is planned for this country. The dust cover is clear perspex and has adjustable friction hinges. It is also removable.

The whole base plate assembly is sprung to provide acoustic damping, the tonearm included.

Our sample came supplied with a remote control panel and an associated sensor. We are informed that this is the standard format for this country.

The majority of controls associated with the 4000 are situated on a sloping front fascia on the base plate. However, the tonearm and stroboscope mechanism are both on the sprung section of the base board. The strobe light is good and strong and we found it was easy to read the markings on the outside of the platter even in high natural light conditions.

The control panel at the front is most impressive with its vast array of white push switches. These switches select the playing programme and function control.

Four rotary knobs on the left select power on/off, the sensor adjustment, (for sensitivity adjustment of the track counting system) and pitch control for both speeds.

Following to the right, the white buttons (which operate easily with a light touch of the finger) cover the following functions: speed selection, record size selection, memory clear, play mode, reject mode, cue control, repeat mechanism and track selection (either from track 1 to track 13 or all of them—one after the other).

Inbuilt into the cartridge, which happens to be an ADC LMA-1, is an optical sensing system. This little device actually counts the tracks on the record and transfers this to the memory of the 'mini computer' which initiates the programming of the unit.

A small lever is fitted to the



cartridge which allows adjustment to the set-down area of the stylus.

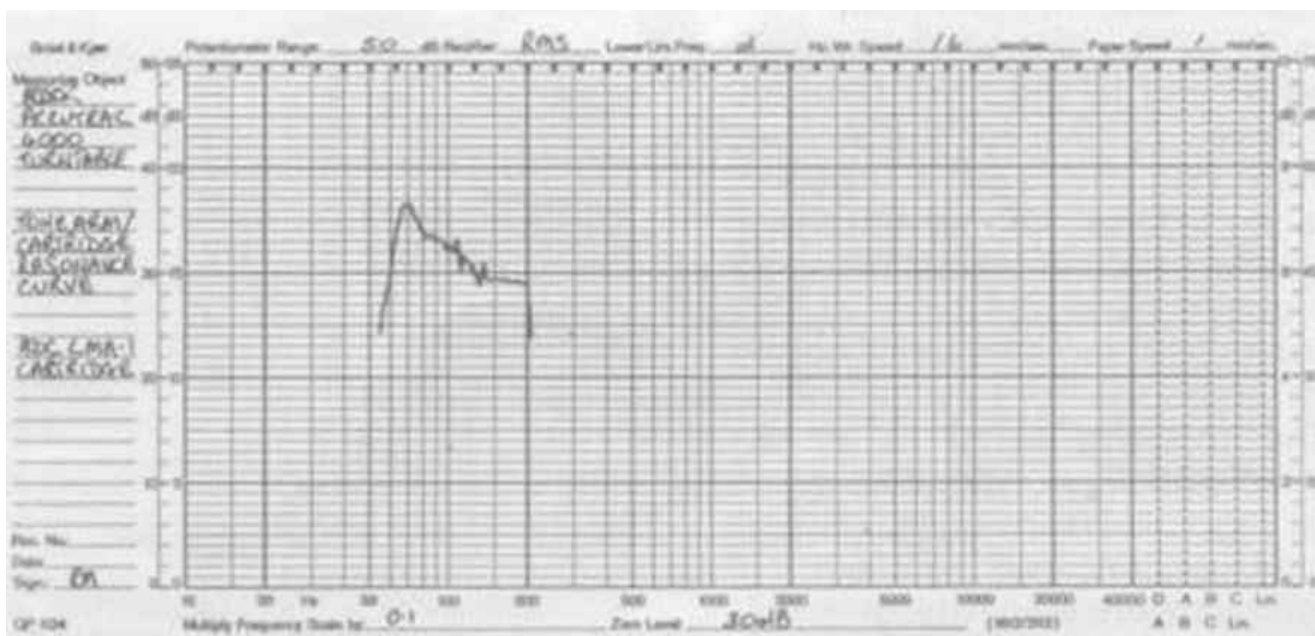
Space does not permit a really in-depth look at the workings of this unit, but suffice it to say everything works just as the manufacturer claims. The remote

control works well and duplicates all the front panel control functions.

Any number of tracks may be put into sequence, however the memory must always be cleared if 'new orders' are given. ■

ADC Accutrac 4000 Suggested Price: \$625 (complete) Distributor: B.S.R. (A'ssis) Pty. Ltd.

	Manufacturer's Specifications	Test Results
<i>Wow and flutter</i>	0.03%	0.085% Weighted RMS
<i>Speed accuracy:</i>		
<i>Standard</i>	Not stated	Exact
<i>Long Term</i>	Not stated	Minimal effect
<i>± 10% voltage</i>	Not stated	Nil effect
<i>Rumble 1 below 1kHz @ 5cm/sec RMS)</i>		
<i>Unweighted</i>	Not stated	-38dB
<i>'A' weighted</i>	-70dB	-73dB
<i>Tonearm Friction:</i>		
<i>Lateral</i>	5—7mg	Minimal
<i>Vertical</i>	5—7mg	Minimal
<i>Platter Resonance</i>	Not stated	Poor
<i>Stat Up Time:</i>	Not stated	2/3 Revolution (33 1/2)





Loud and Proud

HIFI GÖTEBORG.se a

ADC

WANT TO RELAX TO BEAUTIFUL  
MUSIC

**WELCOME**

WE HAVE GOOD HIFI AT YOUR  
SERVICE

PLEASE WAIT HERE & A MEMBER  
OF OUR TEAM WILL BE WITH  
YOU SHORTLY.

Or press finger HERE