

Bang & Olufsen

For Service Manuals
MAURITRON SERVICES
8 Cherry Tree Road, Chinnor
Oxfordshire, OX9 4QY.
Tel (01844) 351694
Fax (01844) 352554
email: - mauritron@dial.pipex.com

BEO LINK 1000

Beolink 1000

The Beolink 1000 gives access to all the primary functions in a Bang & Olufsen system, including audio and video products and light control.

However, it is optimized for use with one-way communicating products, for example the Beosystem 8500 or 3500, or the Beovision LS TV.

This user's guide gives a general introduction into the use of the Beolink 1000 in conjunction with any compatible Bang & Olufsen audio or video system.

For detailed operating instructions, please refer to the user's guide for the appropriate audio or video system.

Contents

- 4 Switching on
- 6 Search functions
- 8 Selecting specific numbers
- 10 Picture and sound control
- Switching off
- 12 Teletext
- 14 On-screen menus

For Service Manuals Contact
MAURITRON TECHNICAL SERVICES
8 Cherry Tree Rd, Chinnor
Oxon OX9 4QY
Tel:- 01844-351694 Fax:- 01844-352554
Email:- enquiries@mauritron.co.uk

Switching on

The upper group of buttons is used to switch on your video or audio system, or the lights.

- TV** Switches on to a TV program
- SAT** Switches on to a satellite program
- V.TAPE** Plays the tape in the video tape recorder
- MENU** Calls up the on-screen menus (TV menu, satellite menu or video tape recorder menu)
- RADIO** Switches on to a radio program
- CD** Plays the disc in the CD player
- A.TAPE** Plays the tape in the audio tape recorder
- PHONO** Plays the record on the turntable
- LIGHT** Gives access to controlling the lights in your Bang & Olufsen Light Control system

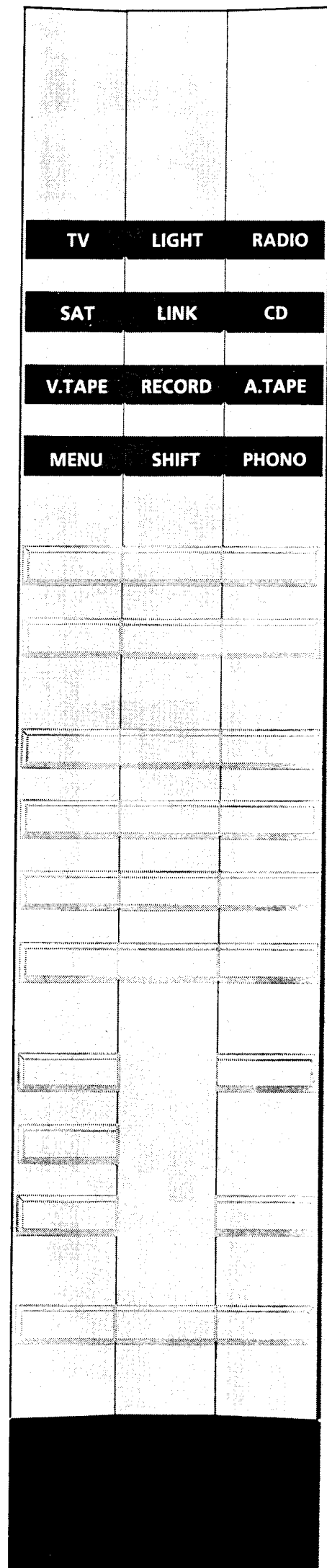
Use the number buttons to select the light picture you want to switch on

Use ▲ or ▼ to turn the lights up or down

Special functions:

- LINK** Used only in a room with X-tra speakers or X-tra TV
- RECORD** Press twice to start recording the current audio or video source
- SHIFT** Accesses special functions

For Service Manuals Contact
MAURITRON TECHNICAL SERVICES
 8 Cherry Tree Rd, Chinnor
 Oxon OX9 4QY
 Tel:- 01844-351694 Fax:- 01844-352554
 Email:- enquiries@mauritron.co.uk



Search functions

The next group of buttons is used to search for specific passages on your tapes (audio or video) or on your CD's.

It also enables you to operate the on-screen menus (see page 14).

If you have called up teletext, you will also use these buttons to control your teletext pages (see page 12).

<< Searches backward

>> Searches forward

STOP Stops playing or recording

PLAY Resumes playing

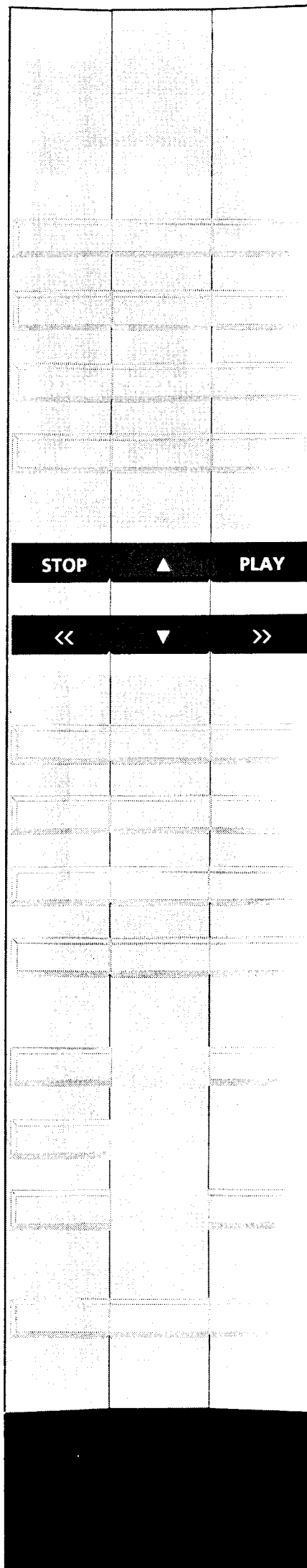
▲ Steps to the next track

▼ Steps to previous tracks

Press once to return to the start of the current track. Press twice to step to the previous track

The step buttons can also be used to step to other TV, satellite or radio programs

For Service Manuals Contact
MAURITRON TECHNICAL SERVICES
8 Cherry Tree Rd, Chinnor
Oxon OX9 4QY
Tel:- 01844-351694 Fax:- 01844-352554
Email:- enquiries@mauritron.co.uk



Selecting specific numbers

The third group of buttons is your keyboard!

0 through **9** You will use the number buttons to key in figures,

9 > for example to select specific program numbers or tracks, or to fill in numbers, for example if you are using the on-screen menus to program your video tape recorder

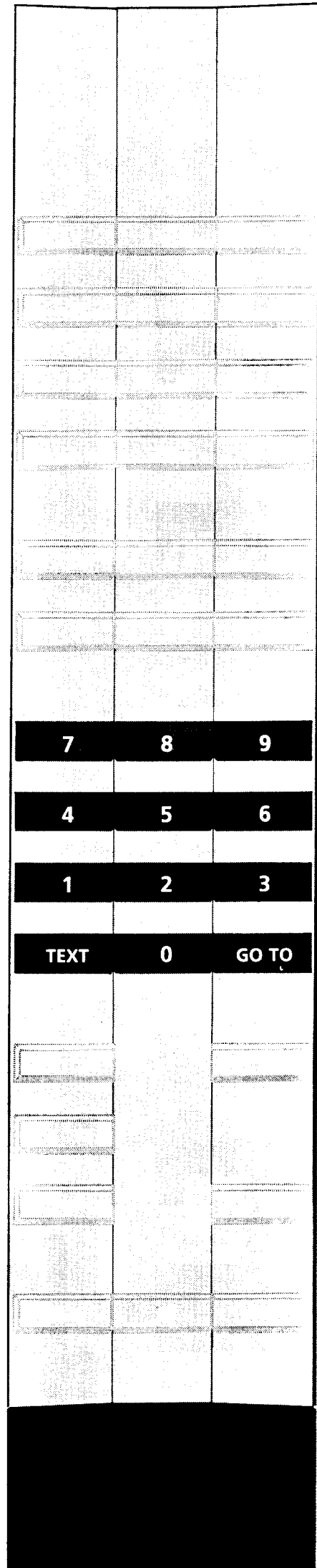
TEXT Calls up teletext

Use the number buttons to select other memory pages

See page 12 for further details of how to use the teletext functions

GO TO Press GO TO, then the number buttons to call up a specific teletext page, to find a specific counter position on your tape, or to access a specific frequency (TV, satellite, radio)

For Service Manuals Contact
MAURITRON TECHNICAL SERVICES
8 Cherry Tree Rd, Chinnor
Oxon OX9 4QY
Tel:- 01844-351694 Fax:- 01844-352554
Email:- enquiries@mauritron.co.uk



Picture and sound control - Switching off

The lower group of buttons is for adjusting picture and sound levels, and for switching off.

PICTURE Accesses the picture adjustment functions - press \wedge or \vee to adjust

STORE Accesses the storing function

To store the current picture or sound levels, press **PICTURE** or **SOUND**, then **STORE** twice

SOUND Accesses the sound adjustment functions - press \wedge or \vee to adjust

\wedge Raises the volume

\vee Lowers the volume

AV This button shifts the sound control from the audio system to the video system, and vice versa

> for example, if you were last addressing the audio system and you want to lower the volume in the TV speakers, you press **AV**, then \wedge or \vee

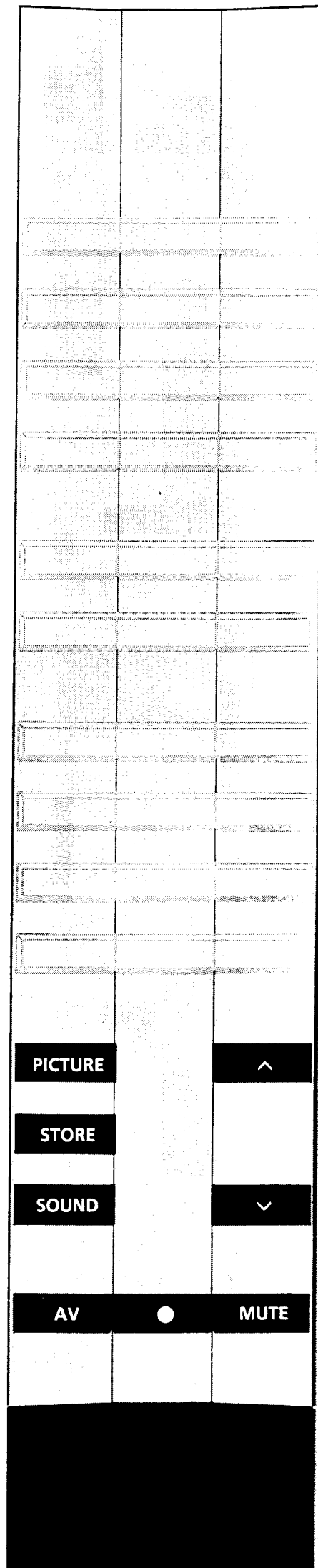
● Switches off the audio or video system

Hold down the button (or press **SHIFT** first) to switch off the entire audio/video system

MUTE Mutes and demutes the speakers

SHIFT, then **MUTE** resets the picture and sound levels

For Service Manuals Contact
MAURITRON TECHNICAL SERVICES
 8 Cherry Tree Rd, Chinnor
 Oxon OX9 4QY
 Tel:- 01844-351694 Fax:- 01844-352554
 Email:- enquiries@mauritron.co.uk



Teletext

The buttons high-lighted here are used to operate the various teletext functions:

TEXT

Switches to teletext

▲

Steps through the memory pages

or

▼

GO TO

Press GO TO, then use the number buttons to select a specific teletext page

LARGE

<<

Enlarges the text in the upper half of the screen

Press a second time to enlarge the text in the lower half of the screen - press again to return to normal size

MIX

>>

Superimposes the TV picture on the teletext page

Press again to remove the TV picture

STOP

Halves the current page

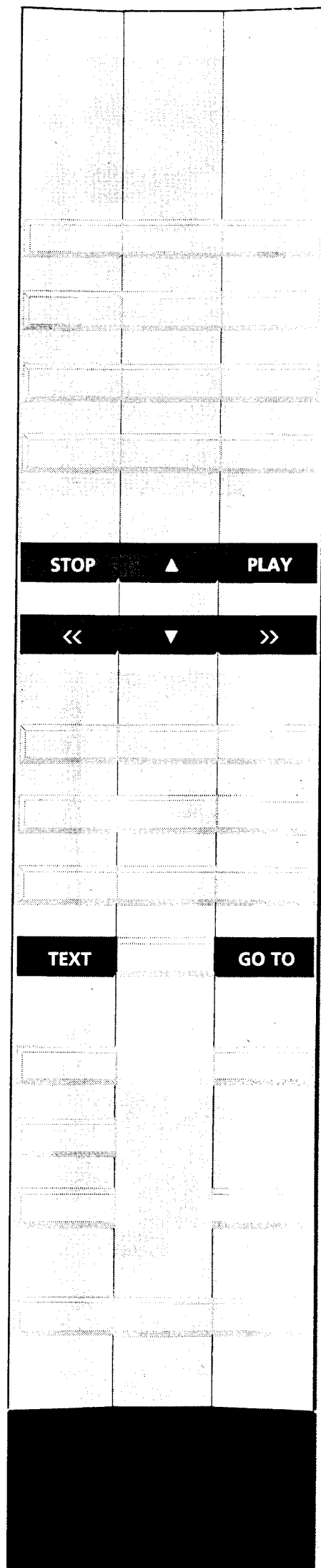
Press again to release the page

PLAY

Reveals concealed text

Press again to conceal the text

For Service Manuals Contact
MAURITRON TECHNICAL SERVICES
8 Cherry Tree Rd, Chinnor
Oxon OX9 4QY
Tel:- 01844-351694 Fax:- 01844-352554
Email:- enquiries@mauritron.co.uk



Operating the on-screen menus

The buttons high-lighted here are used to operate the on-screen menus, for example for timer programming of the video tape recorder:

MENU Calls up the on-screen menu

You will see the main menu of the source you have last selected

<< High-lights the previous item in the menu

>> High-lights the next item in the menu

▲ Reveals the other options, if any, available under the high-lighted item
or

▼

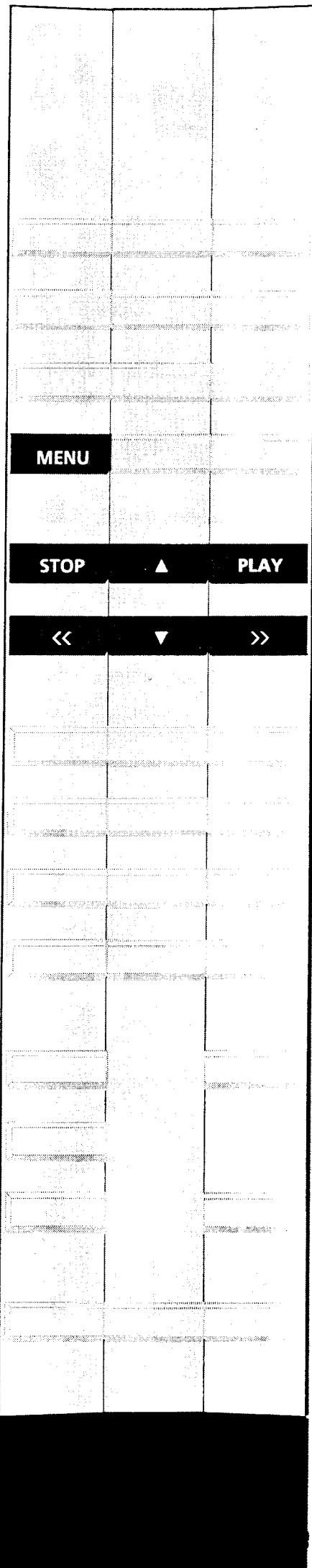
STOP Reverses through the menu pages - without storing any new information or without selecting a specific function

To remove the menu immediately - without storing any new information or without selecting a specific function, select the source you want to see, for example V.TAPE

PLAY Selects the high-lighted item

Accepts (and stores) the page, including any new information

For Service Manuals Contact
MAURITRON TECHNICAL SERVICES
8 Cherry Tree Rd, Chinnor
Oxon OX9 4QY
Tel: 01844-351694 Fax: 01844-352554
Email: enquiries@mauritron.co.uk



Note: You will find that this Beolink 1000 terminal does not possess a button marked TURN, as does the former Beolink 1000 terminal. To carry out functions which can be obtained by pressing TURN on the former Beolink 1000, you must instead press SHIFT, SOUND on this Beolink 1000 terminal.

**For Service Manuals Contact
MAURITRON TECHNICAL SERVICES
8 Cherry Tree Rd, Chinnor
Oxon OX9 4QY
Tel:- 01844-351694 Fax:- 01844-352554
Email:- enquiries@mauritron.co.uk**